

# MINIPACK TRENT 772B ESN 41183



**TSN/CSN: 68026 /12850**

**TSO/CSO: 13880 / 3869**

**LLP REM: 2131 (CAT A: HPC SHAFT)**

**\* LPC DISK WILL BE REPLACED WITH 3371 CYC ONE BEFORE DELIVERY**

**EGT MARGIN: 30 C**

**BORESCOPE CONDITION: SERVICEABLE & NO  
MONITORING ITEM.**

**FULL QEC.**

**ALL DOCS LINK: [HTTPS://1DRV.MS/U/S!AMT-1T8ZTORJGUIU9UN\\_SR7I7ZUNNG?E=EWGF66](https://1DRV.MS/U/S!AMT-1T8ZTORJGUIU9UN_SR7I7ZUNNG?E=EWGF66)**

# LLP STATUS



**MML\_509 - LIFE LIMITED REPORT**  
(Engns/APU SerialNumbers:41183.)

Date: 05-07-2021 00:32  
Page: 1 of 2

Tail Number : TC-OC | Time Since New : 46606.31  
ENGINE : TRENT772B-60/41183 / #1  
MODULE : T700M01 / FM9484

Cycle Since New : 14425 | Last Flight Date : 26-Dec-20  
TSN: 68025:59 | CSN: 12850 | TSO:

CSO:

Part Name	Part Number	Serial Number	TSN	CSN	Life Limit	Remaining Cycle
LP COMP DISC	FK22541	STDK25234	68025.36	12850	13010	160
ASSY LP COMPRESSOR SHAFT	FK21980	BBAN654	68025.36	12850	15000	2150
LP COMPRESSOR BLADE	FW23741	RGF17394	66858.36	12215	14336	2121
LP COMPRESSOR BLADE	FW23741	RGF17177	66858.36	12215	14336	2121
LP COMPRESSOR BLADE	FW23741	RGF17445	66858.36	12215	14336	2121
LP COMPRESSOR BLADE	FW23741	RGF17375	66858.36	12215	14336	2121
LP COMPRESSOR BLADE	FW23741	RGF16256	66937.36	12235	14336	2101
LP COMPRESSOR BLADE	FW23741	RGF17247	66333.36	12087	14336	2249
LP COMPRESSOR BLADE	FW23741	RGF17324	66333.36	12087	14336	2249
LP COMPRESSOR BLADE	FW23741	RGF17382	66333.36	12087	14336	2249
LP COMPRESSOR BLADE	FW23741	RGF17388	66858.36	12215	14336	2121
LP COMPRESSOR BLADE	FW23741	RGF17341	68228.36	12601	14336	1735
LP COMPRESSOR BLADE	FW23741	RGF17364	66333.36	12087	14336	2249
LP COMPRESSOR BLADE	FW23741	RGF17414	66858.36	12215	14336	2121
LP COMPRESSOR BLADE	FW23741	RGF17360	67647.36	12261	14336	2075
LP COMPRESSOR BLADE	FW23741	RGF17372	66858.36	12215	14336	2121
LP COMPRESSOR BLADE	FW23741	RGF17133	66858.36	12215	14336	2121
ASSY ANNULUS FILLER	FW52833	P148302-02	35033.36	8338	12000	3662
ASSY ANNULUS FILLER	FW52833	P151155-05	35033.36	8338	12000	3662
ASSY ANNULUS FILLER	FW52833	P148310-05	35033.36	8338	12000	3662
ASSY ANNULUS FILLER	FW52833	P148309-01	35033.36	8338	12000	3662
ASSY ANNULUS FILLER	FW52833	P148302-06	35033.36	8338	12000	3662
ASSY ANNULUS FILLER	FW52833	P148067-03	35033.36	8338	12000	3662
ASSY ANNULUS FILLER	FW52833	P148310-06	35033.36	8338	12000	3662
ASSY ANNULUS FILLER	FW52833	P148310-04	35033.36	8338	12000	3662
ASSY ANNULUS FILLER	FW52833	P148319-04	32186.36	8153	12000	3847
ASSY ANNULUS FILLER	FW52833	P148302-04	35033.36	8338	12000	3662
ASSY ANNULUS FILLER	FW52833	P148066-06	35033.36	8338	12000	3662
ASSY ANNULUS FILLER	FW52833	P148067-06	35033.36	8338	12000	3662
ASSY ANNULUS FILLER	FW52833	P148066-01	35033.36	8338	12000	3662
ASSY ANNULUS FILLER	FW52833	P146179-03	35033.36	8338	12000	3662
ASSY ANNULUS FILLER	FW52833	P148068-04	35033.36	8338	12000	3662
ASSY ANNULUS FILLER	FW52833	P151155-04	35033.36	8338	12000	3662
ASSY ANNULUS FILLER	FW52833	P148068-05	35033.36	8338	12000	3662
ASSY ANNULUS FILLER	FW52833	202542P211219-1	25164.36	6183	12000	5817
ASSY ANNULUS FILLER	FW52833	P148309-05	35033.36	8338	12000	3662
ASSY ANNULUS FILLER	FW52833	202542P210545-3	25164.36	6183	12000	5817
ASSY ANNULUS FILLER	FW52833	P148068-02	35033.36	8338	12000	3662
ASSY ANNULUS FILLER	FW52833	P151948-04	35033.36	8338	12000	3662
ASSY ANNULUS FILLER	FW52833	P148302-05	35033.36	8338	12000	3662
ASSY ANNULUS FILLER	FW52833	P151948-01	35033.36	8338	12000	3662
ASSY ANNULUS FILLER	FW52833	P148068-03	35033.36	8338	12000	3662
ASSY ANNULUS FILLER	FW52833	P148066-03	35033.36	8338	12000	3662
LP COMPRESSOR BLADE	KH23403	RGF17252	70113.36	13805	20000	6195
LP COMPRESSOR BLADE	KH23403	RGF17400	70609.36	13132	20000	6868
LP COMPRESSOR BLADE	KH23403	RGF17124	70609.36	13132	20000	6868
LP COMPRESSOR BLADE	KH23403	RGF16324	70609.36	13132	20000	6868
LP COMPRESSOR BLADE	KH23403	RGF17169	70113.36	13805	20000	6195
LP COMPRESSOR BLADE	KH23403	RGF21090	56156.36	12104	20000	7896
LP COMPRESSOR BLADE	KH23403	RGF17015	70609.36	13132	20000	6868
LP COMPRESSOR BLADE	KH23403	RGF17062	70609.36	13132	20000	6868
LP COMPRESSOR BLADE	KH23403	RGF16301	70609.36	13132	20000	6868
LP COMPRESSOR BLADE	KH23403	RGF17034	70609.36	13132	20000	6868
LP COMPRESSOR BLADE	KH23403	RGF16770	70609.36	13132	20000	6868

The lowest life limiter of this engine at moment of this Cycle is (160) cycles

# LLP STATUS



MM\_509 - LIFE LIMITED REPORT  
(Engine/APU Serial Number=41183)

Date: 05-07-2021 00:32  
Page: 2 of 2

Tail Number : TC-OC | Time Since New : 46606.31 | Cycle Since New : 14425 | Last Flight Date : 26-Dec-20  
**ENGINE : TRENT772B-60/41183 / #1** | TSN: 68025:59 | CSN: 12850 | TSO: | CSO:  
**MODULE : T700M02 / FM9485**

Part Name	Part Number	Serial Number	TSN	CSN	Life Limit	Remaining Cycle
ASSY OF STG 1-8 ROTOR DISC	FK26048	RRDCDD005645	13879:36	3869	12600	8731
SHAFT ASSY OF IP COMP REAR	FW21759	DAVN564A	68025:36	12850	15000	2150

The lowest life limiter of this engine at moment of this Cycle is (160) cycles

**ENGINE : TRENT772B-60/41183 / #1** | TSN: 68025:59 | CSN: 12850 | TSO: | CSO:  
**MODULE : T700M04 / FM9488**

Part Name	Part Number	Serial Number	TSN	CSN	Life Limit	Remaining Cycle
ROTOR HP TURBINE DISC	FK26893	RRSUNDN217	13879:36	3869	9000	5131
SHAFT A/O ROTOR DJSCS HP COMP	FW71779	RRD1569	13879:36	3869	6000	2131

The lowest life limiter of this engine at moment of this Cycle is (160) cycles

**ENGINE : TRENT772B-60/41183 / #1** | TSN: 68025:59 | CSN: 12850 | TSO: | CSO:  
**MODULE : T700M05 / FM9485**

Part Name	Part Number	Serial Number	TSN	CSN	Life Limit	Remaining Cycle
ROTOR IP TURBINE SHAFT	FW12356	BAEF6238	68025:36	12850	15000	2150
IPT ROTOR DISC	FW53118	ADREB922	68025:36	12850	15000	2150

The lowest life limiter of this engine at moment of this Cycle is (160) cycles

**ENGINE : TRENT772B-60/41183 / #1** | TSN: 68025:59 | CSN: 12850 | TSO: | CSO:  
**MODULE : T700M08 / FM9485**

Part Name	Part Number	Serial Number	TSN	CSN	Life Limit	Remaining Cycle
ASSY LP TURBINE SHAFT	FK21826	BBAP2536	13879:36	3869	15000	11131
LPT STG 1 ROTOR DISC	KH21395	CREW2251	68025:36	12850	15000	2150
LPT STG 2 ROTOR DISC	KH21396	CREW2295	68025:36	12850	15000	2150
LPT STG 3 ROTOR DISC	KH21397	CREW2269	68025:36	12850	15000	2150
LPT STG 4 ROTOR DISC	KH21398	CREW2275	68025:36	12850	15000	2150

The lowest life limiter of this engine at moment of this Cycle is (160) cycles



# SERVICEABLE FORM

1. Approving Competent Authority/Country <b>EASA</b>		2. <b>AUTHORISED RELEASE CERTIFICATE EASA FORM 1</b>			3. Form Tracking Number <b>RM0422 E</b>	
4. Approved Organisation Name and Address:  <b>APMS Aviation Limited.</b> Hangar K4, Cotswold Airport, Gloucestershire, GL7 8BA United Kingdom				5. Work Order/Contract/Invoice <b>PO SNNP_94124</b>		
6. Item <b>ONE</b>	7. Description <b>AERO ENGINE</b>	8. Part No. <b>Trent 772B-60</b>	9. Qty. <b>ONE</b>	10. Serial No. <b>41 183</b>	11. Status / Work <b>Inspected/Tested</b>	
12. Remarks <b>NOTE: Borescope Inspection Plugs / Blanks are not Removed or Reinstalled by APMS</b>  <b>Video borescope inspection carried out in accordance with Airbus AMM Chapter 72-00-00 Dated Jan 01/2022;</b>  Intermediate Pressure Compressor Blades. IAW AMM Ch. 72-00-00-200-812-A. High Pressure Compressor Blades. IAW AMM Ch. 72-00-00-200-813-A. High Pressure Turbine Blades. IAW AMM Ch. 72-00-00-200-814-A. Intermediate Pressure Turbine Blades IAW AMM Ch. 72-00-00-200-815-A. Low Pressure Turbine Blades IAW AMM Ch. 72-00-00-200-816-A. High Pressure Turbine Nozzle Guide Vanes IAW AMM Ch. 72-00-00-200-817-A. Combustion Chamber IAW AMM Ch. 72-00-00-200-818-A.  Engine found acceptable to the borescope inspection limits of the above referenced technical data without restriction.  <b>Engine Hours and Cycles - TSN: 68,025:59 Hrs Cycles: 12,850 Note - Hours and Cycles information is provided by the operator, and not verified BY APMS.</b>						
13a. Certifies that the items identified above were manufactured in conformity to. <input type="checkbox"/> approved design data and are in condition for safe operation <input type="checkbox"/> non-approved data specified in block 12			14a. <input checked="" type="checkbox"/> Part-145.A.50 Release to Service <input type="checkbox"/> Other regulation specified in Block 12 Certifies that unless otherwise specified in block 12, the work identified in block 11 and described in block 12 was accomplished in accordance with Part-145 and in respect to that work the items are considered ready for release to service.			
13b. Authorised Signature		13c. Approval/Authorisation Number		14b. Authorised Signature 		
13d. Name		13e. Date (dd/mm/yyyy)		14c. Certificate/Approval Number <b>EASA.UK.145.01272</b>		
				14d. Name <b>Robert Meehan</b>		
				14e. Date (dd/mm/yyyy) <b>10/APR/2022</b>		
<b>USER / INSTALLER RESPONSIBILITIES</b> This certificate does not automatically constitute authority to install the item(s) Where the user / installer performs work in accordance with regulations of an airworthiness authority different than the airworthiness authority specified in block 1, it is essential that the user / installer ensures that his / her airworthiness authority accepts items from the airworthiness authority specified in block 1. Statements in blocks 13a and 14a do not constitute installation certification. In all cases aircraft maintenance records shall contain an installation certification issued in accordance with the national regulations by the user / installer before the aircraft may be flown.						



# AD STATUS

MM_508 - AD/CN/SB STATUS REPORT										Date: 05-07-2021 00:35	
(Doc.Type / Applicable=EASA-AD, 41183, Order By=T, Properties=A, Current Packages=Y, Comments Flag=Y)										Page: 1 of 8	
Task Number Rev#	Effective Date	Title / Description	Reference	Applicability	Status	Threshold	Interval	Last Due	Next Due	Remaining	EO or Task Remarks Last Done Remarks / Comment
2006-0205 Rev#0	28-10-2006	OL FILLER CAP ASSEMBLY INSPECTION SR TREAT 500, 509 ENGINE OIL TANK - OL FILLER CAP ASSEMBLY INSPECTION / REPLACEMENT	TCH458B-VSB R0211-79-A204 R AD:2006-05-01	APPL	CLOSED			29036.37 H 4088 C 18-06-2008			PERFORMED BY HAESI. Current Package:
2006-0116 Rev#0	15-05-2006	LPC BLADE ANNULAR FILLER REVISED LIVES SR TREAT 700 - L/F COMPRESSOR - BLADE ANNULAR FILLER REVISED LIVES	SB-R0211-72-AF109 AD:2006-03-07	APPL	OPEN						REVISED LIVES REFLECTED TO SYSTEM, FOLLOWED BY ENGINE IAP STATUS. Current Package:
2007-0130 Rev#1	28-03-2007	IPC SHAFT INSPECTION R0211 TREAT 700 SERIES ENGINE - IF COMPRESSOR SHAFT - INSPECTION	AD:2007-02-08 SB-R0211-72-AF107 SB-R0211-72-AD253	APPL	OPEN		SHOP VISIT	54145.43 H 8861 C 27-08-2014			NEW PART INSTALLED, SEE LAST SV REPORT, PERFORM AT EVERY QUALIFIER SV. Current Package:
2007-0201 Rev#0	13-08-2007	H/P TURBINE BEARING INSPECTION ENGINE - H/P TURBINE BEARING OIL VENT TUBES INSPECTION / CLEANING / REPLACEMENT	SB-R0211-72-AE02 AD:2007-02-08 AD:2010-07-08 EO-AS30-30793165	APPL	OPEN		6400.00 H 1600 C	87884.40 H 12814 C 14814 C	14284.40 H 14814 C	6208.41 H 1584 C	PERFORMED BY OCK W0.862 DISCOVERIES DURING OJAZ CHECK WITH INSPECTION. PERFORMED BY SRI LANKAN AIRLINES. Current Package:
2007-0202 Rev#0	13-08-2007	H/P TURBINE INSPECTION CLEANING REPLACEMENT ENGINE - H/P TURBINE BEARING OIL VENT TUBE RESTRICTOR - INSPECTION / CLEANING / REPLACEMENT	SB-R0211-72-AF424 SB-R0211-72-AE02 SB-R0211-72-AE100 AD:2010-07-08	APPL	CLOSED			29036.37 H 4088 C 18-06-2008			PERFORMED BY HAESI. Current Package:
2007-0206 Rev#0	04-12-2007	HP COMPRESSOR TEST/MODIFICATION R0211 TREAT ENGINE - HP COMPRESSOR TEST/MODIFICATION	SB-R0211-71-0309 SB-R0211-72-E224 SB-R0211-72-D214 SB-R0211-71-AD309 SB-R0211-72-AD224	N/A	CLOSED						N/A DUE TO THE ACCOMPISHMENT OF THE TERMINATING ACTION SB72-D214, SEE LAST SV REPORT.
2007-0280 Rev#1	18-10-2007	I/F BEARING OIL FEED TUBE INSP SR TREAT 700 - IF TURBINE BEARING OIL FEED TUBE - INSPECTION / MODIFICATION	SB-R0211-72-AP945 AD:2007-02-08 SB-R0211-72-D214 SB-R0211-72-F048 SB-R0211-72-F227 AD:2007-04-08	N/A	CLOSED						ONE TIME INSPECTION TERMINATING ACTION SB 72-F227 PERFORMED PREVIOUSLY.
2009-0021 Rev#0	20-03-2009	IF AND HP COMPRESSOR SHAFTS - INSPECTION R0211 TREAT 700 AND TREAT 800 ENGINES - ENGINE - IF AND HP COMPRESSOR SHAFTS - INSPECTION	SB-R0211-72-AG08 EM TASK-TASK73-33-300-801 EM TASK-TASK72-41-31-300-801 AD:2010-09-11	N/A	CLOSED						N/A DUE TO SHAFT SN IS 88DC000084.
2009-0209 Rev#0	08-04-2009	PT BEARING OIL VENT & SCAVENGE TUBE INSPECTION ENGINE - PT TURBINE BEARING OIL VENT & SCAVENGE TUBE INSPECTION / MODIFICATION	SB-R0211-72-AE100 R 04 SB-R0211-72-F227 SB-R0211-72-E208 R 02 SB-R0211-72-F117 SB-R0211-72-E985 AD:2008-04-09	N/A	CLOSED						DUE TO TERMINATING ACTION SB 72-F227 PERFORMED PREVIOUSLY.

MM_508 - AD/CN/SB STATUS REPORT										Date: 05-07-2021 00:35	
(Doc.Type / Applicable=EASA-AD, 41183, Order By=T, Properties=A, Current Packages=Y, Comments Flag=Y)										Page: 2 of 8	
Task Number Rev#	Effective Date	Title / Description	Reference	Applicability	Status	Threshold	Interval	Last Due	Next Due	Remaining	EO or Task Remarks Last Done Remarks / Comment
2006-0187 Rev#0	20-05-2011	FRONT COMBUSTION LINER ENGINE - FRONT COMBUSTION LINER HEAD SECTION - INSPECTION / REPLACEMENT	SB-R0211-72-AG075	APPL	CLOSED			54145.00 H 8861 C 27-08-2014			PERFORMED BY HAESI, DURING SV. Current Package:
2009-0204 Rev#0	14-10-2009	ENGINE MOUNT LINK PIN RETENTION BOLTS - INSPECTION / REPLACEMENT ENGINE MOUNT LINK PIN RETAINING BOLTS	EO-AS30-30710205 SB-R0211-71-A773 SB-71-3020 ASA-AD:2009-02-04	APPL	CLOSED			53444.00 H 8821 C 03-05-2014			FOLLOWED BY EO 30710205, PERFORMED BY SRI LANKAN AIRLINES @1460008. Current Package:
2009-0240 Rev#0	19-11-2009	POWER PLANT - PRATT & WHITNEY ENGINE - INSPECTION OF FORWARD AND A/C MOUNT Pylon BOLTS	SB-PW4168-71-35 SB-71-3020 KASA-AD:2009-02-04	N/A	CLOSED						N/A BY ENGINE TYPE
2009-0243 Rev#0	25-11-2012	FRONT COMBUSTION LINER INNER WALL - INSPECTION FRONT COMBUSTION LINER INNER WALL - REPETITIVE INSPECTION *** RR SB 72-C107 CONSTITUTES TERMINATING ACTION FOR THE REPETITIVE INSPECTION	SB-R0211-72-AF408 SB-R0211-72-C107 AD:2011-05-07 EO-AS30-30793437	N/A	CLOSED						TERMINATING ACTION SB 72-C107 PERFORMED BY HAESI.
2009-0217 Rev#0	17-12-2009	FOUR REPLACEMENT ENGINE FUEL SYSTEM FUEL TO OIL HEAT EXCHANGER (POW) REPLACEMENT	SB-R0211-72-AC538 SB-R0211-72-AG546 AD:2010-07-01	APPL	CLOSED			59880.00 H 5336 C 08-01-2010			MODIFIED FUEL PIN 5500001-21 FOUND DURING A/C DELIVERY. Current Package:
2013-0021 Rev	16-10-2012	HIGH TEMPERATURE PRESSURE TURBINE BEARING SUPPORT	SB-R0211-72-AC070 SB-R0211-72-F117 SB-R0211-72-F227	N/A	CLOSED						N/A DUE TO ENGINE IS POST SB72-F227 STANDARD.
2013-0038 Rev	01-07-2013	AIR GLIDE TUBE / PHONIC RING INSPECTION ENGINE AIR GLIDE TUBE / PHONIC RING INSPECTION AD REQUIRES A ONE TIME INSPECTION TO DETERMINE WHAT STANDARD OF PHONIC RING IS INSTALLED AND, IF POST SB 72-C811 PHONIC RING PIN (W1027) INSTALLED, CONTACT ROLLS ROYCE FOR APPROVED CORRECTIVE INSTRUCTIONS		N/A	CLOSED						DUE TO ISN IS NOT LISTED IN AD EFFECTIVITY LIST.
2013-0642 Rev#0	12-03-2013	HPC STG ROTOR DISC & SHAFT ENGINE - HIGH PRESSURE (HP) COMPRESSOR STAGE 1 TO A ROTOR DISCS AND HP COMPRESSOR ROTOR SHAFTS - INSPECTION ***THIS AD SUPersedes EASA AD 2009-0073K1***	SB-R0211-72-AP984 AD:2013-03-21	N/A	CLOSED						INCLUDED IN THE HAESI WORKSHEET DUE TO IFC ROTOR SHAFT PN P701179.



# AD STATUS

MM_508 - AD/CN/SB STATUS REPORT											Date: 05-07-2021 00:35
(Doc Type / Applicability: EASA-AD, 41183, Order By: T, Properties: A, Current Packages: Y, Comments Flag: Y.)											Page: 3 of 8
Aircraft Type: A320-200		Date: 26-12-2020		Component Type: ENGINE		Date: 26-12-2020					
Tail Number: TC-OKI ONUR AIRLINES		TSN: 46806-31		Component Number: TRENT772D-60		TSN: 6825-59					
MSN: 823		CSN: 14423		Serial Number: 41183		CSN: 12850					
Task Number	Effective Date	Title / Description	Reference	Applicability	Status	Threshold	Interval	Last Done	Next Due	Remaining	EO or Task Remarks Last Done Remarks / Comment
2013-0150 Rev0	01-08-2013	LIP & R TURBINE DISC IDENTIFICATION AND REPLACEMENT OF AFFECTED LIPS	SB-RB211-72-A1132 AD-2013-23-17	N/A	CLOSED						DUE TO IPT DISK P/N FK20903 S/N R05UN0211 AND IPT DISK P/N FK20795 S/N AD06262 CURRENTLY INSTALLED.
2013-0190 Rev	03-09-2013	ENGINE FUEL & CONTROL ENGINE ELECTRONIC SOFTWARE A1413 UPDATE	SB-RB211-72-AC829 AD-2014-14-01	APPL	CLOSED			30422-44 II 0209 C 19-02-2018			PERFORM BEFORE DECEMBER 2018 IPC P/N FEICR10-01EX CURRENTLY INSTALLED. Current Package
2014-0031-1 Rev		I/P COMPRESSOR I/P COMPRESSOR BLADES INSPECTION/ REPLACEMENT			SUPERSEDED						
		***SUPERSEDES EASA AD 2013-0006***			SUPERSEDED						
2014-0031-2 Rev		I/P COMPRESSOR I/P COMPRESSOR BLADES INSPECTION/ REPLACEMENT			SUPERSEDED						
		***SUPERSEDES EASA AD 2013-0006			SUPERSEDED						
		"RESPECTIVE PHASED ARRAY INSPECTION"			SUPERSEDED						
2014-0152-1 Rev	05-03-2018	INTERMEDIATE PRESSURE COMPRESSOR ROTOR SHAFT AND BALANCE WEIGHT INSPECTION INTERMEDIATE PRESSURE COMPRESSOR ROTOR SHAFT AND BALANCE WEIGHT INSPECTION *** FOLLOWED BY ORY EO 7203011 *** THIS EASA AD SUPERSEDES EASA-AD 2013-0002-2 ***	EASA-AD-2010-0206-1 SB-RB211-72-AG270 EO-A320-10720011 EASA-AD-2010-0002-1 AD-2013-02-20	N/A	CLOSED						RESCOPE INSPECTION IS REQUIRED FOR THIS INSPECTION ACCOMPLISHMENT OF SB RB211-72-AG42 (AT SHOP TERMINATES) IS ONLY N/A BY ENGINE TYPE AFTER ISSUANCE OF EASA AD 2018-0049E1
2014-0152-2 Rev	09-03-2018	INTERMEDIATE PRESSURE COMPRESSOR ROTOR SHAFT AND BALANCE WEIGHT INSPECTION INTERMEDIATE PRESSURE COMPRESSOR ROTOR SHAFT AND BALANCE WEIGHT INSPECTION *** THIS EASA AD SUPERSEDES EASA-AD 2013-0002-2 ***	EASA-AD-2014-0152-1 SB-RB211-72-AG42 EASA-AD-2013-0002-2	N/A	CLOSED						EDDY CURRENT INSPECTION REQUIRED AND ONLY BE PERFORMED IPC REAR FACE EXPOSED. ADOPTED SB RB211-72-AG42B INFO DRAFT WORK SCOPE ACCOMPLISHMENT OF SB RB211-72-AG42 (AT SHOP DOES NOT TERMINATE) INSPECTION OF EDDY CURRENT. N/A BY ENGINE TYPE AFTER ISSUANCE OF EASA AD 2018-0049E1

MM_508 - AD/CN/SB STATUS REPORT											Date: 05-07-2021 00:35
(Doc Type / Applicability: EASA-AD, 41183, Order By: T, Properties: A, Current Packages: Y, Comments Flag: Y.)											Page: 4 of 8
Aircraft Type: A320-200		Date: 26-12-2020		Component Type: ENGINE		Date: 26-12-2020					
Tail Number: TC-OKI ONUR AIRLINES		TSN: 46806-31		Component Number: TRENT772D-60		TSN: 6825-59					
MSN: 823		CSN: 14423		Serial Number: 41183		CSN: 12850					
Task Number	Effective Date	Title / Description	Reference	Applicability	Status	Threshold	Interval	Last Done	Next Due	Remaining	EO or Task Remarks Last Done Remarks / Comment
2014-0153-3 Rev	05-03-2018	INTERMEDIATE PRESSURE COMPRESSOR ROTOR INTERMEDIATE PRESSURE COMPRESSOR ROTOR SHAFT AND BALANCE WEIGHT INSPECTION ** THIS PART OF AD IS FOR ACCOMPLISHMENT OF SB RB211-72-AG42 *** THIS EASA-AD SUPERSEDES EASA-AD 2013-0002-2 ***	SB-RB211-72-AG42 EASA-AD-2013-0002-2	APPL	CLOSED			54145-03 II 8981 C 27-09-2014			ACCOMPLISHMENT OF SB RB211-72-AG42 (AT SHOP DOES TERMINATE) IS THAT IS FOLLOWED BY EASA AD 2018-0049E1 AND FOLLOWED BY ORY T WORKSCOPE. TERMINATING ACTION SB 12-AC402 PERFORMED DURING 2018 SVY. Current Package
2014-0243-1 Rev01		ENGINE FUEL AND CONTROL LOW PRESSURE FUEL TUBES AND CLIPS FUEL OIL HEAT EXCHANGER MOUNTS INSPECTION / REPLACEMENT ** FOLLOWED BY ORY EO 720308, 720301 AND 720 ENGINES DRAFT WORKSCOPE. ** ON-WING INSPECTION IS COVERED BY SB 72-A0511 AND EO 720301 *** THIS AD SUPERSEDES EASA AD 2014-0086 ***			SUPERSEDED						
2014-0243-3 Rev01		ENGINE FUEL AND CONTROL LOW PRESSURE FUEL TUBES AND CLIPS FUEL OIL HEAT EXCHANGER MOUNTS INSPECTION / REPLACEMENT FOLLOWED BY ORY EO 720305 THAT IS GOING TO BE PERFORMED AT EVERY A-CHECK INSPECTION			SUPERSEDED						
2014-0243-4 Rev01		ENGINE FUEL AND CONTROL LOW PRESSURE FUEL TUBES AND CLIPS FUEL OIL HEAT EXCHANGER MOUNTS INSPECTION / REPLACEMENT FOLLOWED BY ORY DRAFT WORKSCOPE AT EVERY AIRCRAFT VISIT			SUPERSEDED						
2015-0106-1 Rev01	24-06-2015	INSPECTION AND REPLACEMENT OF THE OIL FEED TUBE SEALING SLEEVE ENGINE INTERMEDIATE PRESSURE TURBINE BEARING SUPPORT OIL FEED TUBE SEALING SLEEVE INSPECTION/ REPLACEMENT PART 1: ACCOMPLISHMENT OF SB 72-A0173 AS PER EASA AD 2014-0166 *** FOLLOWED BY ORY EO 7203011 ***	EASA-AD-2014-0166 SB-30211-72-A0173 EO-A320-10720001 SB-RB211-72-A2024 SB-RB211-72-01754	APPL	CLOSED			54145-03 II 8981 C 27-09-2014			APPLICABLE TO PRE-SB 72-1034 ENGINES ONLY. PERFORMED BY HARS, DURING SVY. Current Package





# AD STATUS

Task Number Rev.	Effective Date	Title / Description	Reference	Applicability	Status	Threshold	Interval	Last Done	Next Due	Remaining	EO or Task Remarks Last Done Remarks / Comment
2015-0105-2 Rev0	24-06-2018	INSPECTION AND REPLACEMENT OF THE OIL FEED TUBE SEALING SLEEVE ENGINE HIGH INTERMEDIATE PRESSURE TURBINE BEARING SUPPORT OIL FEED TUBE SEALING SLEEVE INSPECTION/ REPLACEMENT PART 2: ACCOMPLISHMENT OF SB 72-A303. *** FOLLOWED BY QRY EO T20351***	EASA-AD-2014-0188 SB-RR211-72-A303 EASA-AD-2018-020301 SB-RR211-72-A303 SB-RR211-72-A303	APPL	CLOSED	11146 C		60385-27 H 10600 C 06-05-2017			Performed by OCKU/A3-2017 with task 10720351 and revision 1 APPLICABLE TO PRE-SB 72-10754 ENGINES ONLY. FOLLOWED BY QRY EO T20351 Current Package:
2018-0130-1 Rev0	01-07-2018	ENGINE FUEL AND CONTROL LP FUEL TUBES, CLIPS AND FORTH MOUNTING HARDWARE - INSPECTION FOR FRET/TAGE	SB-RR211-73-A1822 EASA-AD-2018-0218-1 EO-A330-30/73351 SB-RR211-73-A1826	APPL	OPEN		6000-00 H 12402 C 28-06-2019	66528-58 H 70526-58 H 12814 C 28-02-2020	2020-05 H		Performed by OCKU/A3-2019 with task 10730351 and revision 37 THIS AD SUPERSEDES EASA AD 2014-02430-1 PERFORMED BY ALK WITH W/P 2018070076 Current Package:
2018-0130-2 Rev0	01-07-2018	ENGINE FUEL AND CONTROL LP FUEL TUBE UPPER CLIP (C/F481) AND BRACKET INSPECTION	EO-A330-30/73351 SB-RR211-73-A1822 EASA-AD-2014-0243-3 SB-RR211-73-A1826	APPL	OPEN		800-00 H 12814 C 28-02-2020	60884-40 H 12814 C 28-02-2020	038-41 H		Performed by OCKU/A2-2020 with task 10730351 and revision 38 THIS AD SUPERSEDES EASA AD 2014-02430-1 PERFORMED BY ALK WITH W/P 2018070076 Current Package:
2018-0130-3 Rev0	01-07-2018	ENGINE FUEL AND CONTROL LP FUEL TUBES, CLIPS, AND FORTH MOUNTING HARDWARE - INSPECTION FOR FRET/TAGE FOLLOWED BY QRY DRAFT WORKSCOPE PERFORM AT EVERY SHOP VISIT	SB-RR211-73-A1822 EASA-AD-2014-0243-4 SB-RR211-73-A1826	APPL	OPEN				SHOP VISIT		THIS AD SUPERSEDES EASA AD 2014-02430-1 PERFORM SB 73-A1826 AT EVERY SHOP VISIT Current Package:
2018-0130-4 Rev0	01-07-2018	ENGINE FUEL AND CONTROL FUEL AND CONTROL - FUEL TUBES - LP COMPRESSOR CASE - INTRODUCTION OF REVISED LP FUEL HYDRAULIC AND OIL TUBE ASSEMBLIES WITH OPTIMISED ROUTING AND CLAMPING ARRANGEMENT FOLLOWED BY QRY DRAFT WORKSCOPE PERFORM AT NEXT QUALIFIED SHOP VISIT	SB-RR211-73-A1826 EASA-AD-2016-0130-4 SB-RR211-73-A1826	APPL	OPEN				SHOP VISIT		THIS AD SUPERSEDES EASA AD 2014-02430-1 ACCOMPLISHMENT OF PART 4 OF THIS AD TERMINATES REPETITIVE INSPECTIONS. PERFORM AT NEXT QUALIFIED SV. Current Package:
2016-0141 Rev0		LP COMPRESSOR *** SUPERSEDED BY EASA AD 2017-0041*** LP COMPRESSOR BLADES INSPECTION/ REPLACEMENT "REPETITIVE PHASSED ARRAY INSPECTION"			SUPERSEDED						

Task Number Rev.	Effective Date	Title / Description	Reference	Applicability	Status	Threshold	Interval	Last Done	Next Due	Remaining	EO or Task Remarks Last Done Remarks / Comment
2017-0003 Rev0		COMPRESSOR INTERMEDIATE CASE INSPECTION/REPAIR IT HAS BEEN DETERMINED THAT COMPRESSOR INTERMEDIATE CASES (CIC) THAT HAVE REPAIR FREGIONS APPLIED SHOULD UNDERGO ONE-TIME FLUORESCENT PENETRANT INSPECTION (FPI) IN ORDER TO REDUCE PROBABILITY OF CRACKING			SUPERSEDED						
2017-0041 Rev0	10-03-2017	HYDRAULIC DAMPER REPLACEMENT THIS AD REQUIRES REPLACEMENT OF THE HYDRAULIC PRESSURE TUBE ASSEMBLY P/N A27112-18 WITH AN IMPROVED ASSEMBLY P/N A27112-18 REV A (DOUBLE WELD DED DAMPER) IN ORDER TO PREVENT CRACKS DEVELOPMENT.	TRC1 A07-A7102-18 SB-RR211-29-A1006 SB-RR211-73-A1826 EASA-AD-2018-0120-4 EASA-AD-2018-0021	N/A	CLOSED						THIS AD REQUIRES REPLACEMENT OF NEW DAMPER AT EVERY 800 FC. THIS AD WILL BECOME APPLICABLE WHEN AN ENGINE IS MODIFIED BY SB 73-A1826 (EASA AD 2018-0120-4) TERMINATING ACTION : SB 28-A1842 (REPLACEMENT OF P/N: A27112-18 WITH P/N: A27112-18) N/A DUE TO ENGINE IS PRE-SB-A1826. NEW HYDRAULIC TUBE ASSY (A27112-18) MUST BE INSTALLED.
2017-0071 Rev0	10-05-2017	COMPRESSOR INTERMEDIATE CASE INSPECTION/REPAIR IT HAS BEEN DETERMINED THAT COMPRESSOR INTERMEDIATE CASES (CIC) THAT HAVE REPAIR FREGIONS APPLIED SHOULD UNDERGO ONE-TIME FLUORESCENT PENETRANT INSPECTION (FPI) IN ORDER TO REDUCE PROBABILITY OF CRACKING	SB-RR211-72-A1876	APPL	OPEN	16564 C			16564 C	3714 C	ON-WING NOT APPLICABLE. ONLY CAN BE PERFORMED AT QUALIFIED SV. TO BE PERFORMED AT NEXT QUALIFIED SHOP VISIT OR WITHIN 800 CYCLES - WHICHEVER OCCURS FIRST Current Package:
2017-0041 Rev0		LP COMPRESSOR LP COMPRESSOR BLADES INSPECTION/ REPLACEMENT "REPETITIVE PHASSED ARRAY INSPECTION"			SUPERSEDED						
2018-0019 Rev0	09-02-2018	CHANGES TO TIME LIMITS MANUAL ENGINE - CHANGES TO TIME LIMITS MANUAL AND AIRCRAFT MAINTENANCE MANUAL - LIFE MANAGEMENT	SB-RR211-72-A1805	N/A	CLOSED						**LP TURBINE SHAFT PK1488 LIFE LIMIT IS REDUCED TO 1000 CYCLES. **BELOW P/N'S SHOULD NOT BE INSTALLED ON LP-GROUP A. LIFE LIMITS OF THOSE P/N'S REDUCED TO ZERO! IPC REAR SHAFT: PK1294 HPC ROTOR SHAFT: PK2451, PK2745, PK2933, PK3580, PK2816, PK3126, PK2018, PK2018, PK2019, PK2020, PK2021, PK2022, PK2023, PK2024, PK2025, PK2026, PK2027, PK2028, PK2029, PK2030, PK2031, PK2032, PK2033, PK2034, PK2035, PK2036, PK2037, PK2038, PK2039, PK2040 N/A DUE TO LP-GROUP A P/N'S INSTALLED.



# AD STATUS

MM_508 - AD/CN/SB STATUS REPORT											Date: 05-07-2021 00:35	
(Doc. Type / Applicable=EASA-AD, 41183, Order By=T, Proprietary=A, Current Packages=Y, Comments Flag=Y.)											Page: 7 of 8	
Aircraft Type: A330-300		Date: 26-12-2020		Component Type: ENGINE		Date: 26-12-2020						
Tail Number: TC-OCJ ONUR AIRLINES		TSN: 46606-31		Component Number: TR02NT7728-60		TSN: 68025-59						
MSN: 623		CSN: 11423		Serial Number: 41183		CSN: 12850						
Task Number Rev.	Effective Date	Title / Description	Reference	Applicability	Status	Threshold	Interval	Last Done	Next Due	Remaining	RD or Task Remarks Last Done Remarks / Comment	
2018-0049-1 Rev:1	09-03-2018	INTERMEDIATE PRESSURE COMPRESSOR ROTOR SHAFT AND BALANCE WEIGHT INSPECTION INTERMEDIATE PRESSURE COMPRESSOR ROTOR SHAFT AND BALANCE WEIGHT INSPECTION.	SB-RB211-72-AG270 EO-A330-30782011	N/A	CLOSED						SCOPESCOPE INSPECTION IS REQUIRED FOR THIS INSPECTION ACCOMPLISHMENT OF SB RB211-72-0402 (AT SHOP) TERMINATES ISI ONLY. TERMINATING ACTION SB 72-AC-603 PERFORMED DURING LAST SV.	
2018-0049-2 Rev:1	09-03-2018	INTERMEDIATE PRESSURE COMPRESSOR ROTOR SHAFT AND BALANCE WEIGHT INSPECTION INTERMEDIATE PRESSURE COMPRESSOR ROTOR SHAFT AND BALANCE WEIGHT INSPECTION.	SB-RB211-72-AG206 SB-RB211-72-AG452	APPL	OPEN			54145-43 H 8961 C 27-09-2014			READY CURRENT INSPECTION REQUIRED AND ONLY BE PERFORMED IFC REAR FACE EXPOSED. ADDSD SB RB211-72-AG4032 INTO DRAFT WORK SCOPE. ACCOMPLISHMENT OF SB RB211-72-AG402 (AT SHOP) DOES NOT TERMINATE INSPECTION OF READY CURRENT. NEW PART FITTED AT 2014 SV. REPEAT INSPECTIONS AT EACH SV WHERE IFC REAR FACE EXPOSED. Current Package: Performed by OCK01A11-3019 with task 187025229 and signature 28 THIS AD SUPERSEDES EASA AD 2017-0641 PERFORMED BY SRI LANKAN AIRLINES. Current Package:	
2018-0186 Rev:1	11-09-2018	LPCOMPRESSOR LPCOMPRESSOR BLADES INSPECTION/ REPLACEMENT "REPETITIVE PHASED ARRAY INSPECTION"	EASA-AD-2016-0141 EO-A330-30723229 EASA-AD-2016-0047 SB-RB211-72-CB72 SB-RB211-72-0311 SB-RB211-72-C732 SB-RB211-72-A1468 EASA-AD-2013-0060 EASA-AD-2014-0031-1 EASA-AD-2014-0031-2 EASA-AD-2017-0841	APPL	OPEN	11234 C	1200 C	60782-53 H 12208 C 02-07-2019	13408 C	358 C	Current Package: Performed by OCK01A11-3019 with task 187025229 and signature 28 THIS AD SUPERSEDES EASA AD 2017-0641 PERFORMED BY SRI LANKAN AIRLINES. Current Package:	
2018-0391 Rev	04-01-2019	HIGH PRESSURE TURBINE BLADES - REPLACEMENT REPLACEMENT OF AFFECTED HIGH PRESSURE TURBINE BLADES	SB-RB211-72-AK185	N/A	CLOSED						**PILOYA VENO BER MOTOR CELEKED ZAMAN SB 72-AK185 IN APPENDIX INDE YER ALAN ISN LERON KONTROLU MUTLAKA YAPILMALDIR** AD TPU 22-06-01/20 ISN NOT LISTED IN AFFECTED ISN LIST.	
2019-0021 Rev	27-02-2019	POWERPLANT ENGINE HYDRAULIC DAMPER-MODIFICATION REPLACEMENT OF HYDRAULIC PRESSURE TUBE ASSEMBLIES HAVING PART NUMBER AET11121-18 WITH PART NUMBER AET11121-22 WITHIN SPECIFIED TIME LIMIT.	AD-2019-02-12 SB-RB211-72-AJ366 EASA-AD-2017-0041	N/A	CLOSED						CANCEL REQUIREMENTS OF AD 2017-0041 N/A DUE TO ENGINE PRE MODIF 72-AJ366	

MM_508 - AD/CN/SB STATUS REPORT											Date: 05-07-2021 00:35	
(Doc. Type / Applicable=EASA-AD, 41183, Order By=T, Proprietary=A, Current Packages=Y, Comments Flag=Y.)											Page: 8 of 8	
Aircraft Type: A330-300		Date: 26-12-2020		Component Type: ENGINE		Date: 26-12-2020						
Tail Number: TC-OCJ ONUR AIRLINES		TSN: 46606-31		Component Number: TR02NT7728-60		TSN: 68025-59						
MSN: 623		CSN: 11423		Serial Number: 41183		CSN: 12850						
Task Number Rev.	Effective Date	Title / Description	Reference	Applicability	Status	Threshold	Interval	Last Done	Next Due	Remaining	RD or Task Remarks Last Done Remarks / Comment	
2020-0253 Rev	26-11-2020	LOW PRESSURE COMPRESSOR BLADES / DISCS INSPECTION / RESTORATION / RESTORATION THIS AD REQUIRES REPETITIVE DISC WING ULTRA-SOUND GUN INSPECTIONS OF THE BLADE ROOTS OF THE AFFECTED BLADES, SUBSEQUENT RE JURISDICTION OF THE AFFECTED BLADES AND DISCS AND, DEPENDING ON FINDINGS, ACCOMPLISHMENT OF APPLICABLE CORRECTIVE ACTIONS. THIS AD ALSO REQUIRES IN-SHOP RESTORATION OF THE AFFECTED BLADES AND DISCS TO A SERVICEABLE CONDITION, WHICH CONSTITUTES TERMINATING ACTION FOR THE REPETITIVE US INSPECTIONS AND BE JURISDICTIONS AS REQUIRED BY THIS AD.	SB-RB211-72-AR452 SB-RB211-72-AR522 AD-2021-08-01-2 AT-2021-08-01-1	N/A	CLOSED						N/A DUE TO SW OF ENGINE FAN BLADES AND LPC DISC AS PER SB 72-AM42	
2021-0128 Rev	01-06-2021	HYDRAULIC PRESSURE SWITCH HARNESS INSPECTION THIS AD REQUIRES A ONE-TIME INSPECTION OF EACH AFFECTED ENGINE AND, DEPENDING ON FINDINGS, ACCOMPLISHMENT OF APPLICABLE CORRECTIVE ACTIONS. THIS AD ALSO PROHIBITS INSTALLATION OF AN AFFECTED ENGINE AND PROVIDES THE CONDITIONS FOR ENGINE INSTALLATION.	TSCN-A07-A11019-21 SB-RB211-72-AN077 EO-A330-30710879	APPL	OPEN						Current Package:	

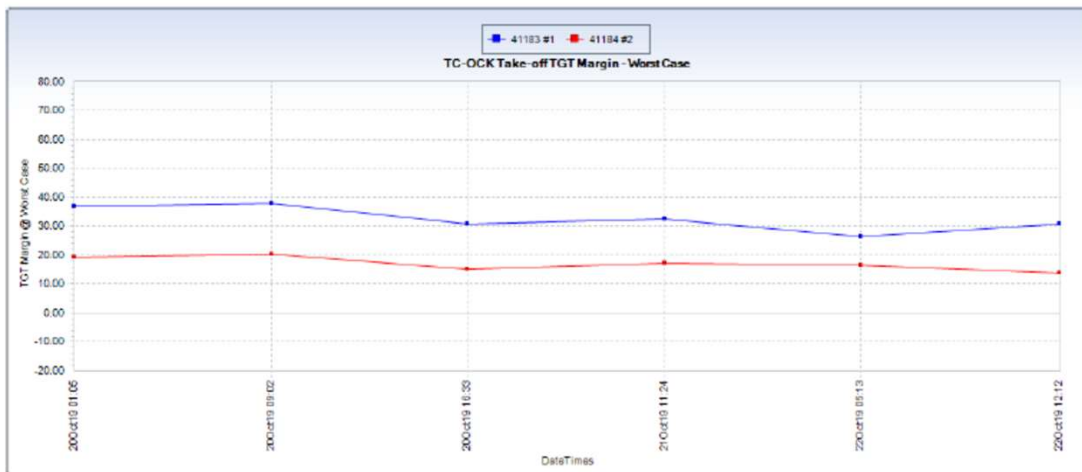
Onurair  
POWERPLANT REGULATORS



# EGT MARGIN

## Take Off Performance - T700 : TGT Margin @ Worst Case

Domain: Trent 700, Operator: OHY:97, Equipment Type: Aircraft, Equipment: TC-OCK, View: All, From: 19/10/2019, To: 19/06/2020, Previous Installations: true



## Take Off Performance - T700 : TGT SLOATL

Domain: Trent 700, Operator: OHY:97, Equipment Type: Aircraft, Equipment: TC-OCK, View: All, From: 19/10/2019, To: 19/06/2020, Previous Installations: true



02 July 2021

**Engine Incident/Accident Clearance Statement**

To Whom It May Concern:

The Engine SN 41183 details of which are specified below, has been operated by ONUR AIR TASIMACILIK A.S. during the period from 15-APR-2016 until and including the date written above.

Description	Type/Part No.	Serial No.	TSN	CSN
Engine	TRENT 772B-60	41183	68025:59	12850

I hereby certify that, to the best of my knowledge, during the period stated above:

1. Neither the engine, nor any part installed have been;
  - a. damaged during, or identified as the root cause of, a reportable incident or accident as defined by Annex 13 to the Chicago Convention, or
  - b. subjected to severe stress or heat (such as in a major engine failure, accident, or fire) or has been submersed in salt water,

unless its airworthiness status was re-established by an approved maintenance organisation in accordance with the applicable airworthiness regulations and instructions of the type certificate holder and/or supplemental type certificate holder and/or OEM of the part, and supported by an authorised airworthiness release certificate.

2. No part has been installed on the engine, was obtained from a military source or was previously fitted to a state aircraft as deemed by Article 3 of the Chicago Convention

Yours Truly

A handwritten signature in blue ink, appearing to read "C. Sagnaci".

Cengiz SAGNACI  
Engineering Director



# LAST OVERHAUL TAG

1. Approving Competent Authority / Country <b>European Aviation Safety Agency</b>		2. <b>AUTHORISED RELEASE CERTIFICATE</b> EASA FORM 1			3. Form Tracking Number <b>0085074</b>	
4. Organisation Name and Address:  <b>HONG KONG AERO ENGINE SERVICES LIMITED</b> 70 Chun Choi Street, Tseung Kwan O Industrial Estate Tseung Kwan O, New Territories, Hong Kong.				5. Work Order / Contract / Invoice SALES ORDER NO.: 1249589 P.O NO : 4600148516		
6. Item	7. Description	8. Part No.	9. Qty.	10. Serial No.	11. Status / Work	
1	ROLLS-ROYCE ENGINE	RB211 TRENT 772B-60/16	ONE	41183	OVERHAULLED	
12. Remarks ENGINE LIFE : TSN : 54145.71 CSN : 8981 TSR : 0 CSR : 0 ENGINE WAS ACCEPTABLE TO DECLARE 'ETOPS' COMPLIANT. ENGINE WAS REWORKED IAW. CUSTOMER WORKSCOPE REF. : CAN4713/14 & RR EMP RM1874 ISSUE 22, RM1730 ISSUE 12 & RR ENGINE MANUAL REF. : E-TRENT-IRR TL84 REQUIREMENTS. ENGINE IS PRESERVED FOR 3 MONTHS AS PER RR ENGINE MANUAL REF. : E-TRENT-IRR TL84 CHAPTER 72-00-00 (STORAGE) AND PLEASE ENSURE THE ENGINE IS STORED AND RE-INSPECTED IAW. RR REQUIREMENTS. ANY INTERRUPTION TO THE ENGINE PACKAGE CONDITION, AT RECEIPT, MAY INVALID THE DATE WHICH REQUIRES TO BE RE-INSPECTED AS RR INSTRUCTION. ALL NMP, INTERNAL COMPONENTS ARE INSPECTED / REPAIRED / OVERHAULLED AS PER CMM REF. : CMM-EHC-TRENT-IRR TL30, CMM-MECH-TRENT-IRR TL44, CMM-THE-TRENT-IRR TL43. MANDATORY AIRWORTHINESS RELEASE INFORMATION IAW, BUT NOT LIMITED TO AMC 145.A-42(b) AND APPENDIX II TO THE COMMISSION REGULATION (EC) No 2042/2003, IS DETAILED IN THE ATTACHED ENGINE DISPATCH PAPERWORK SERIAL NO.: 0085074/1. ALL RELEVANT AD'S HAVE BEEN INCORPORATED AT THIS SHOP VISIT AND RELEASED ON 27 / SEPTEMBER / 2014.						
13a. Certifies that the items identified above were manufactured in conformity to: <input type="checkbox"/> approved design data and are in a condition for safe operation <input type="checkbox"/> non-approved design data specified in block 12			14a. <input checked="" type="checkbox"/> Part-145.A.50 Release to Service <input type="checkbox"/> Other regulation specified in block 12 Certifies that unless otherwise specified in Block 12, the work identified in block 11 and described in block 12, was accomplished in accordance with Part-145 and in respect to that work the items are considered ready for release to service.			
13b. Authorised Signature		13c. Approval / Authorisation Number		14b. Authorised Signature  P. 019 P.O. NO 086565		14c. Certificate / Approval Ref. No. <b>EASA.145.0079</b>
13d. Name		13e. Date (dd/mmm/yyyy)		14d. Name <b>NG PING KAM.</b>		14e. Date (dd/mmm/yyyy) 27 / SEP / 2014



# QEC / LRU STATUS

**TRENT 700 ENGINE INVENTORY CHECK LIST**

08 NOV 2022

REV 1

Engine number 41183 Date

No	Item	IPC reference	Typical Part no.	Actual Part No.	Serial No.	Supplied	Received	Returned
1	HP Bleed Shut-off Valve (BFE)	361113 01-100	6763D0X0000	6734090000	00339			
2	HP Bleed Check Valve (Cabin Air Non-Return Valve)	361111 01-700	HTE450001-9 EB100904B AA1052-00	NV	NV			
3	Fire Sensor - Zone 2	261219 01-100	901404	NV	NV			
4	Igniter Lead - LH	742111 01-200	430934-2	430934-2G	59501			
5	Front & Rear IPT Overheat Detector Thermocouples	772211 01-075 & 772211 01-094	2723RTC1 & 852-5-16	2723RTC1 852-5-16	0709452 3445			
6	Igniter Plugs (2 off)	742112 01-200	CH34736	NV	NV			
7	TGT Thermocouple Harness - Negative	772112 01-220	685-4-22	NV	NV			
8	TGT Thermocouple Harness - Positive	772112 01-218	685-3-21	NV	NV			
9	Integrated Drive Generator (BFE)	242111 01-100	752168B	752168B	AAAD002247			
10	Duct - HP Bleed Check Valve Housing & Duct - HP/IP Bleed to PRV	361149 01-125 & 361149 03-100	LJ41826 & LJ41820	LJ41862 LJ41820	FR065/T MPF1576			
11	Duct - HP Cabin Air to Shut-off Valve	361149 03-010	LJ41823	LJ41823	FR015/BC			
12	Igniter Boxes (2 off)	741111 01-502 & 741111 01-540	430154	430154	00492031 99225877			
13	Igniter Lead - RH	742111 02-200	430934-2	430934-2G	59501			
14	VSV Actuator Control Valve	753312 01-550	1875MKX	1875MK5	1875345			
15	Pipes - HP Bleed Valve to Controller (4 off)	361148 02-100 361148 02-500 361148 03-100 & 361148 03-500	FK20936 & FK25637 & FK18785 & FK24046	FK20936 FK25637 FK18785 FK24046	NO SERIAL			
16	IDG Cooler	242211 01-725	48114-11XX	48114-1133	AC24104			

Trent700\_Inventory Check List ESN41183

Page 1 completed by

*[Signature]*  08 NOV 2022

# QEC / LRU STATUS

**TRENT 700 ENGINE INVENTORY CHECK LIST**

08 NOV 2022

REV 1

Engine number 41183 Date

No	Item	IPC reference	Typical Part no.	Actual Part No.	Serial No.	Supplied	Received	Returned
17	IDG Cables (4 off)	242115		N/V	N/V			
18	Anti-icing Duct Assy - Upper Anti-icing Duct Assy - Lower Front	302148 01-310 & 302148 01-510	LJ41869 & LJ41870	N/V	N/V			
19	Fairing Assy - Nose - Upper Bifurcation	720314 07-250	FK25869	FK25869	N/V			
20	Electronic Engine Controller	732111 01-350	EEC20X0-XXXX	N/V	N/V			
21	Zone 1 Sensor - LH	261215 01-100	901402-03	901402-03	437			
22	Ducts - Pressure Regulating Valve to Pylon (2-off)	361149 03-180 361149 02-050	LJ41608 LJ41609	N/V	N/V			
23	Power Control Unit	732115 01-350	PCU5000MK5	N/V	N/V			
24	Data Entry plug	732112 01-260	DEP6000MK3	N/V	N/V			
25	Overspeed Protection Unit (OPU)	732120 01-350	OPU8000MKX	N/V	N/V			
26	T30 Thermocouple Probe - LH	773312 03-200	2716RTC1	N/V	N/V			
27	Air Temperature Thermocouple - Zone 3	754111 01-200	42TC15-3	N/V	N/V			
28	Integrated Drive Generator - QAD	242113 01-050	758510	N/V	N/V			
29	Pressure Regulating Valve (BFE)	361115 01-800	6764B0X0000	6764B040000	00736			
30	Remote Charge Converter	773212 01-300	241-226-000-021	241-226-000-21	0254			
31	Fuel Oil Heat Exchanger	792111 01-030	55003001-XX	55003001-21	074R			
32	Air Oil Heat Exchanger	792112 01-100	TY1716-5X 3200674-2	TY1716-54A	204			
33	Vibration Transducer	773211 01-200	144-9XX-000-XXX	144-958-000-011	0339			
34	Fuel Filter Differential Pressure Switch	733411 01-050	215N04-338	215N04-338	N/V			
35	HP3 Bleed Valve - LH	753317 01-100	AC69588	N/V	N/V			
36	HP3 Bleed Valve - RH Upper	753317 01-100	AC69588	N/V	N/V			

Trent700\_inventory Check List ESN41183

Page 2 completed by

J Ryan



08 NOV 2022

# QEC / LRU STATUS

**TRENT 700 ENGINE INVENTORY CHECK LIST**

Engine number 41133 Date

**08 NOV 2022**

*REV 1*

No	Item	IPC reference	Typical Part no.	Actual Part No.	Serial No.	Supplied	Received	OReturned
37	HP3 Bleed Valve - RH Lower	753317 01-100	AC69588	N/V	N/V			
38	TGT Thermocouple (11off)	772111 01-205	684-12-28	3514 3648 23599 5566 21187 5568 5564 22613 22908 22233 21192	N/V			
39	Zone 1 Fire Sensor - RH	261215 02-100	901400-01	N/V	N/V			
40	Oil Temperature Thermocouples (2 off)	793211 01-410	849-2-13	N/V	N/V			
41	Oil Filler Cap	791112 02-054	436-409-2	436-408-3	0225			
42	<del>Pre SB 73-C550 only</del> Fuel Temperature Thermocouples (2 off)	733211 01-100	849-2-13	POST MOD	-			
43	<del>Post SB 73-C550 only</del> Fuel Temp. Thermocouple blanking plates SB 71-0534 (2 off)	731147 02-250	FW20711	FW20711	N/S			
44	Low Fuel Pressure Switch	733311 01-140	21SN04-337A	21SN04-338	A003809			
45	IP8 Bleed Valve - LH Upper	753316 01-100	AC69590	N/V	N/V			
46	IP8 Bleed Valve - LH Lower	753316 01-100	AC69590	N/V	N/V			
47	IP8 Bleed Valve - RH Upper	753316 01-100	AC69590	N/V	N/V			
48	IP8 Bleed Valve - RH Lower	753316 01-100	AC69590	N/V	N/V			
49	Zone 3 Fire Sensor	261217 02-100	901507-01	N/V	N/V			
50	Hydraulic Flexible Hoses (2 off)	291149 02		AE708749-077 AE708749-076 AE708749-082	N/V			
51	Vibration Junction Box	773213 01-200	822-201-000-211	N/V	N/V			

**08 NOV 2022**

*J Ryan* 



# QEC / LRU STATUS

**TRENT 700 ENGINE INVENTORY CHECK LIST**

Engine number 41183

Date 08 NOV 2022

REV 1

No	Item	IPC reference	Typical Part no.	Actual Part No.	Serial No.	Supplied	Received	0Returned
52	Rigid Hydraulic Pipes	291149		N/V	N/V			
53	VSV Actuator - LH	753311 01-750	1876MK3	N/V	N/V			
54	VSV Actuator - RH	753311 01-750	1876MK3	N/V	N/V			
55	Hydraulic Warning Switch (2 off)	291117 01-400	50-1-3100-00	50-1-3100-00	08301 08299			
56	Hydraulic Case Drain Filter	291143 01-400	QA07693	9A07693	RA4-7702 RA6-1181			
57	IP/HP Case Cooling (TCC) Actuator	752412 01-230	754-1-40480-002	754-1-480-002	6557			
58	IP/HP Case Cooling (TCC) Solenoid Valve	752411 01-600	506-1-04040-002	N/V	N/V			
59	HP/IP Bleed Controller	753315 01-890	EA100377B	N/V	N/V			
60	HPC Exit (T30) Thermocouple Probe - RH Upper	773312 01-200	2716RTC1	2716RTC1	0801830			
61	HPC Exit (T30) Thermocouple Probe - RH Lower	773312 02-200	2716RTC1	2716RTC1	0801836			
62	IPC Exit (T25) Thermocouple Probe	773311 01-200	2712RTC1	2712RTC1	1486401			
63	Vibration Lead - Lane A	773214 01-200	922-237-000-021	922-237-000-021	AK53710			
64	Vibration Lead - Lane B	773214 02-200	922-238-000-021	922-238-000-021	AK51308			
65	Fan Air Valve (BFE)	N/A	N/A	N/A	N/A			
66	Common Nozzle Assy	781114 01-005	FK16 <del>XXX</del>	N/A	N/A			
67	P2/T2 probe	732116 01-400	154GB 0154 <del>XX</del>	N/A	N/A			
68	Fuel Flow Meter Transmitter	733111 01-090	9-217- <del>XX</del>	9-217-62	Y350			
69	Scavenge Oil Filter Housing	792215 01-400	FK13318	N/V	N/V			
70	Magnetic Chip Detector (Master)	792221 01-400	VA3508-1B7802 1B9102 (EMCD)	1B9102P	20125182			
71	Oil Quantity Transmitter	793111 01-610	8TJ146RBU1	8TJ146RBU1	MFA01223			
72	Oil Pressure Transmitters (2 off)	793311 01-030	44337-1 APTE4RB1625	FITTED	N/V			

Trent700\_Inventory Check List ESN41183

Page 4 completed by

*dhym* **08 NOV 2022**

# QEC / LRU STATUS

**TRENT 700 ENGINE INVENTORY CHECK LIST**

Engine number 4183 Date

08 NOV 2022

REV 1

No	Item	IPC reference	Typical Part no.	Actual Part No.	Serial No.	Supplied	Received	Returned
73	Fuel Pump	731211 01-250	721400-3	721400-3	0585			
74	HP Fuel Filter Housing	731114 10-500	FK13614	FITTED	N/V			
75	Starter Motor	801211 01-005	3505788-X	3505788-8	35057881221			
76	Hydraulic Pumps (2 off)	291111 01-010 291111 02-010	974800 974976 3022053-00X	974800 974976	MX830395 MX580143			
77	Flexible Hose - LP Fuel	731146 01-300	AE708749-087	AE708749-087	N/V			
78	Fuel Metering Unit	732113 01-402	FMU701MKX FMU702-0X	FMU702-02	FAC14-277			
79	Fuel Pump Clamp	731211 01-252	30416-7200	N/V	N/V			
80	Low Oil Pressure Switch	793415 01-220	21SN04-341 21SN04-341A	N/V	N/V			
81	Scavenge Oil Differential Switch	793512 01-686	21SN04-340	21SN04-340	A006698			
82	Pressure Oil Differential Pressure Switch	793511 01-501	21SN04-339C	N/V	N/V			
83	Oil Pump	792211 01-100	LR37940X LR47390X	LR47390D	B-198			
84	Mast Assembly - Engine Drains	717114 01-100	FK24517	FK24517	N/V			
85	Starter Control Valve	801213 01-010	3291024-6 3291522-X	3291522-2	19304			
86	Starter Ducting - Upper (from valve) Starter Ducting - Lower (starter to valve)	801249 01-005 801249 01-370	LJ4XXXX & LJ41491	LJ42375 LJ41491	F33550-1 FR060/BE			
87	Fuel Drains Tank Ejector	717112 11-700	P39-401REVF	N/V	N/V			
88	Dedicated Generator Stator	732114 01-070	2704550-1	2704550-1	688			
89	Dedicated Generator Rotor	732114 01-274	2704532-1	N/V	N/V			
90	Exhaust Cone and Attaching Bolts	725516 01-075 725516 01-077	FK16507	N/V	N/V			
91	Starter QAD Adaptor and Clamp Assembly	801212 01-111	3504891-1	N/V	N/V			
92	Front Mount Assembly	712111 01-001	FK14447	N/V	N/V			

08 NOV 2022

*J Ryan*



# QEC / LRU STATUS

TRENT 700 ENGINE INVENTORY CHECK LIST

Engine number 41183 Date

08 NOV 2022

REV 1

No	Item	IPC reference	Typical Part no.	Actual Part No.	Serial No.	Supplied	Received	Returned
93	Rear Mount Assembly	712112 01-001	FK13939	N/V	N/V			
94	Wheel Units			N/V	N/V			
95	Front Freight Guard - with Nose Cowl			N/V	N/V			
96	Front Freight Guard* - without Nose Cowl			N/V	N/V			
97	Transportation Stand (Base)			RRENGSTD 700X02	SK1710075			
98	Transportation Stand (Cradle)			RRENGSTD 700X02	SK1710075			
99	Tow Bar			N/V	N/V			
100	Engine Mounts and Ducts Stabilising Frame		HU55105-1	N/A	N/A			
101	MPV Bag (both halves)			N/A	N/A			
102	Cover - Fan Case Front Face	723403 05-070	FK22394					
103	Covers - Fan Case Rear Face - LH & RH	723403 05-500 & 05-550	FK23407 & FK23406					
104	Cover - IDG AOHE	723403 05-985	FK22719					
105	Cover - IDG mount face	726103 01-480	142606					
106	Covers - Hydraulic Pump mount faces (2 off)	726103 01-490	145778	N/A	N/A			
107	Cover - Gearbox Breather duct outlet	726103 01-540	FK15392					
108	Cover - Starter Motor mount face	726103 01-500	FK15430					
109	Cover - HP6 Air Offtake elbow	750049 01-150	LK40895					
110	Cover - IP6 Air Offtake elbow	750048 01-150	LK34494					
111	Covers - HP3 Bleed Valves (3 off)	753317 01-098	FK24753					
112	Covers - IP8 Bleed Valves (4 off)	753316 01-098	FK24753					

08 NOV 2022

Trent700\_Inventory Check List ESN41183

Page 6 completed by

*[Signature]* 

TRENT 700 ENGINE INVENTORY CHECK LIST

Engine number 41183 Date


08 NOV 2022

REV 1

No	Item	IPC reference	Typical Part no.	Actual Part No.	Serial No.	Supplied	Received	Returned
113	Cover - Turbine Case Rear	725203 02-980	FK25564					



# PRESERVATION TAG

STORAGE RECORD CARD						 <small>Wills Aero Management Limited A subsidiary of BAE Systems Limited</small>			
ENGINE TYPE	Trent 700		ENGINE SER NO.	41183		CUSTOMER		AERCAP	
PRESERVED FOR	DAYS		DATE PRESERVED	15-July-2022		ALL ASSOCIATED WORK PACK / WORK ORDER Nos.		WP 11844	
HUMIDITY LIMIT FOR THIS PARTICULAR ENGINE: (AS DETAILED ON STORAGE TASK CARD)			<40 %	AMM REF:					
HUMIDITY LEVEL (%)	DATE INSPECTED	ACTION TAKEN - COMMENTS				REPEAT INSPECTION DATE	NAME	SIGNED	
10	08-Dec-22	Humidity WITHIN Limits <input checked="" type="checkbox"/>	Humidity OUTSIDE Limits <input type="checkbox"/>		05-Jan-23	Fitzpatrick	[Signature]		
10	06-Jan-23	Humidity WITHIN Limits <input checked="" type="checkbox"/>	Humidity OUTSIDE Limits <input type="checkbox"/>		01-Feb-23	Fitzpatrick	[Signature]		
0	25-JAN-23	Humidity WITHIN Limits <input checked="" type="checkbox"/>	Humidity OUTSIDE Limits <input type="checkbox"/>		22-Feb-23	J Price	[Signature]		
0	15-Feb-23	Humidity WITHIN Limits <input checked="" type="checkbox"/>	Humidity OUTSIDE Limits <input type="checkbox"/>		15-Mar-23	Bow	[Signature]		
		Humidity WITHIN Limits <input type="checkbox"/>	Humidity OUTSIDE Limits <input type="checkbox"/>						
		Humidity WITHIN Limits <input type="checkbox"/>	Humidity OUTSIDE Limits <input type="checkbox"/>						
		Humidity WITHIN Limits <input type="checkbox"/>	Humidity OUTSIDE Limits <input type="checkbox"/>						
		Humidity WITHIN Limits <input type="checkbox"/>	Humidity OUTSIDE Limits <input type="checkbox"/>						
		Humidity WITHIN Limits <input type="checkbox"/>	Humidity OUTSIDE Limits <input type="checkbox"/>						
		Humidity WITHIN Limits <input type="checkbox"/>	Humidity OUTSIDE Limits <input type="checkbox"/>						
		Humidity WITHIN Limits <input type="checkbox"/>	Humidity OUTSIDE Limits <input type="checkbox"/>						
		Humidity WITHIN Limits <input type="checkbox"/>	Humidity OUTSIDE Limits <input type="checkbox"/>						
		Humidity WITHIN Limits <input type="checkbox"/>	Humidity OUTSIDE Limits <input type="checkbox"/>						
		Humidity WITHIN Limits <input type="checkbox"/>	Humidity OUTSIDE Limits <input type="checkbox"/>						
						Continuation Sheets (X) 2 3 4 5 6 7 8			
WAM-FORM-44 Revision 11. Date as per Q-Pulse									

# BORESCOPE

Report Reference: RM0422\_41183\_AERC\_06APR2022




## Section 1

### General Information

Engine Type: Rolls-Royce Trent 700

Aircraft: A330-200

MSN/Reg/Position: MSN 625 / TC-OCI / 1

Engine S/N	41183	
Rating	772B	
TSN	68,025:59	
TSLSV	-	
CSN	12,850	
CSLSV	-	

### Inspection Details:

Location: AMM, Jordan

Date: 6<sup>th</sup>/10<sup>th</sup> APR 2022

Purchase Order No: SNNP\_94124

Reason for Inspection: Condition Assessment

### Technical Reference Data Used:

Publication Name	Revision umber	Revision Date
Airbus A330 AMM	-	Jan 01/2022

Borescope Inspection Procedures Contained in ATA Section(s): 72-00-00

# BORESCOPE

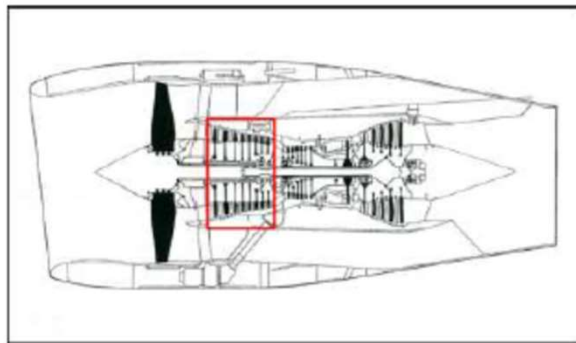
Report Reference: RM0422\_41183\_AERC\_06APR2022



## Section 2

IP Compressor.

- Stages 1 - 8 Blades.



Inspection Findings :

IPC Stage 1 Blades (45ea):

Minor defects noted. All within Reference Data normal service limits. Images included for reference only.





# BORESCOPE

Report Reference: **RM0422\_41183\_AERC\_06APR2022**



## IPC Stage 2 Blades (49ea):

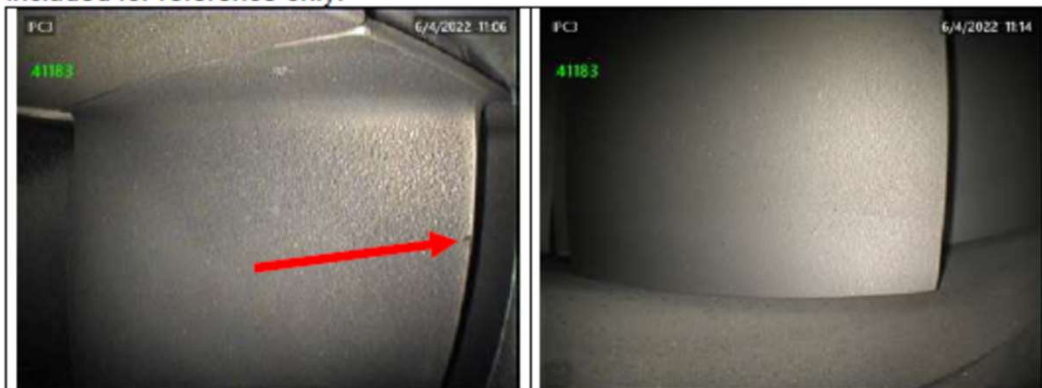
Minor erosion and minor impacts noted within Reference Data normal service limits.



Minor Bend in IPC Stage 2 Leading edge Zone C. Damage accept/reject standards for the IP Compressor stage 2 through 8 blades  
c) You can accept bends or curls in Zone C.

## IPC Stage 3 Blades (58ea):

Minor impacts noted. All within Reference Data normal service limits. Images included for reference only.



# BORESCOPE

Report Reference: **RM0422\_41183\_AERC\_06APR2022**



IPC Stage 4 Blades (53ea):

Minor erosion noted. All within Reference Data normal service limits. Images included for reference only.



IPC Stage 5 Blades (53ea):

Minor erosion and minor impacts noted within Reference Data normal service limits. Images included for reference only.



# BORESCOPE

Report Reference: **RM0422\_41183\_AERC\_06APR2022**



IPC Stage 6 Blades (57ea):

Minor erosion noted. All within Reference Data normal service limits. Images included for reference only.



IPC Stage 7 Blades (53ea):

Minor erosion noted. All within Reference Data normal service limits. Images included for reference only.





# BORESCOPE

Report Reference: **RM0422\_41183\_AERC\_06APR2022**



IPC Stage 8 Blades (49ea):

Minor defects noted. All within Reference Data normal service limits. Image included for reference only.



General Observations – IP Compressor : Noted defects on module are all within Reference Data normal service limits.

# BORESCOPE

Report Reference: RM0422\_41183\_AERC\_06APR2022



HPC Stage 2 Blades (82ea):  
Minor impacts noted. All within Reference Data normal service limits.



Minor dent in HPC Stage 2 Leading edge Zone B, Damage Accept/Reject Standards for the Stage 2 to 6 HP Compressor Blades (1)  
You can accept blades with dents.

HPC Stage 3 Blades (94ea):  
Minor erosion noted. All within Reference Data normal service limits. Images included for reference only.



HPC Stage 4 Blades: Not inspected. No access.

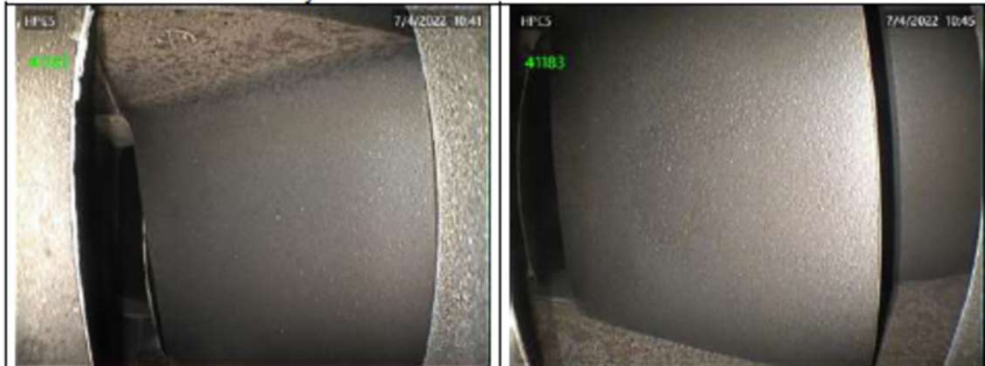
# BORESCOPE

Report Reference: RM0422\_41183\_AERC\_06APR2022



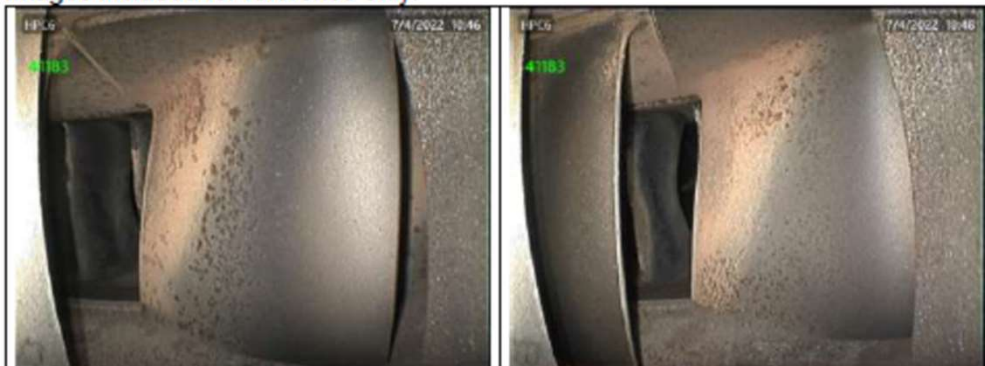
## HPC Stage 5 Blades (76ea):

Minor erosion noted. All within Reference Data normal service limits. Images included for reference only.



## HPC Stage 6 Blades (74ea):

Minor erosion and minor impacts noted within Reference Data normal service limits. Images included for reference only.





# BORESCOPE

Report Reference: RM0422\_41183\_AERC\_06APR2022



Stage 1 Rotor Path Lining:

No significant defects noted. Images included for reference only.



Stage 2 Rotor Path Lining:

No significant defects noted. Images included for reference only.



General Observations – HP Compressor: Noted defects on module are all within Reference Data normal service limits.

# BORESCOPE

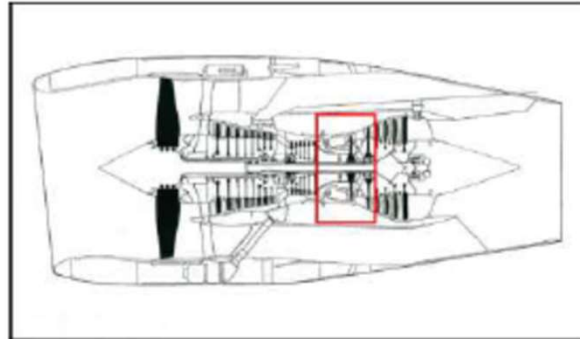
Report Reference: RM0422\_41183\_AERC\_06APR2022



## Section 4

**Combustor, HP & IP Turbines.**

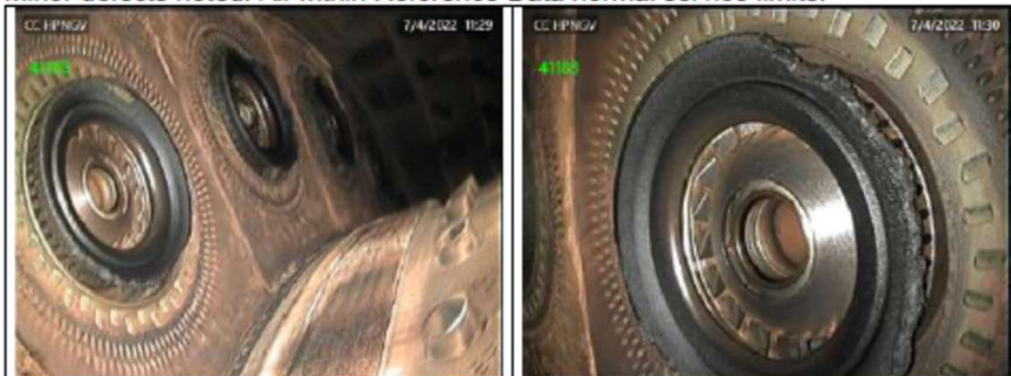
- Combustor.
- HP Nozzle Guide Vanes.
- HP Turbine Blades.
- IP Turbine Blades.



### **Inspection Findings:**

Combustor:

Minor defects noted. All within Reference Data normal service limits.



Fuels Spray Nozzle Burner Seal Erosion, (j) Burns and erosion in the burner seals. 1 You can accept all burning and erosion of the conical section back to the parallel section of the burner seal.

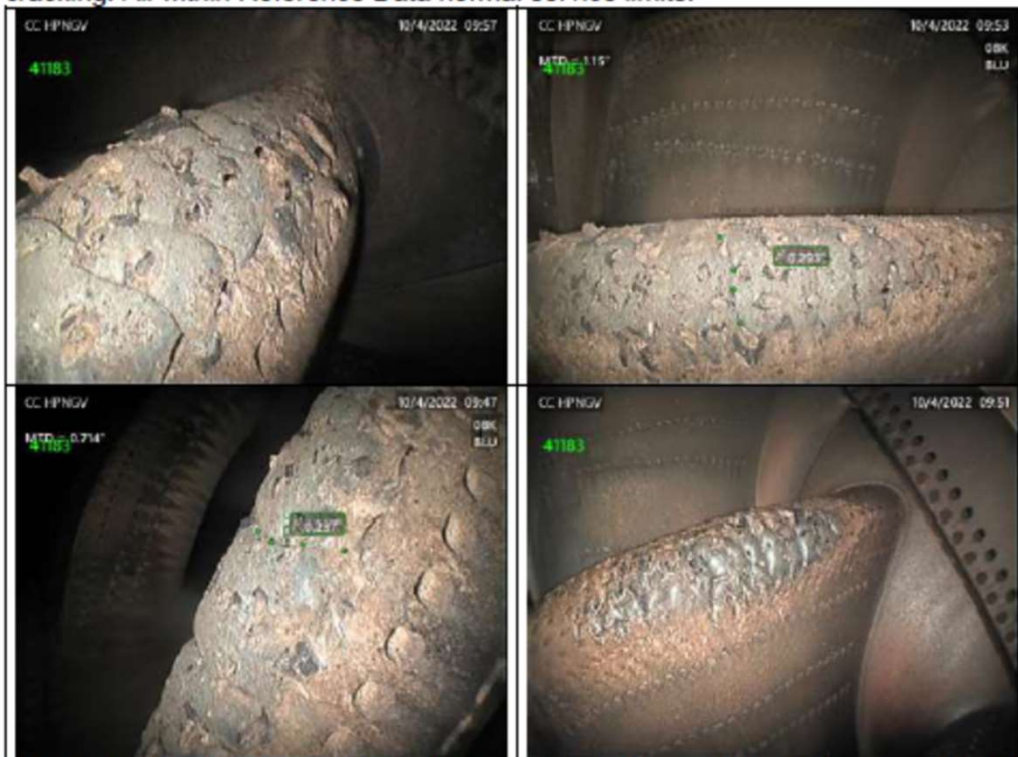
# BORESCOPE

Report Reference: RM0422\_41183\_AERC\_06APR2022



## HP Nozzle Guide Vanes:

Leading edge erosion/burning with axial cracking. Convex aerofoil radial and axial cracking. All within Reference Data normal service limits.



Leading edge burns/erosion with cracks identified, (c) Axial cracks in the leading edge and concave aerofoil. 1 You can accept axial cracks not more than 0.39 in. (10 mm) in length. Accept only if there is no sign of holes or material that has lifted. (G) Damage, burns and/or erosion on the HP nozzle guide vanes. 1 You can accept damage, burns and/or erosion if there is no sign of holes or material that has lifted.



# BORESCOPE

Report Reference: RM0422\_41183\_AERC\_06APR2022



(f) Convex aerofoil NOTE: Boreoscope inspection of the HPNGV Convex aerofoil is not necessary. HPNGV aerofoil deterioration can be identified by leading edge or concave aerofoil inspections. If the Convex aerofoil is inspected, the limits that follow can be applied 1 Accept cracks or erosion (g) Damage, burns and/or erosion on the HP nozzle guide vanes. 1 You can accept damage, burns and/or erosion if there is no sign of holes or material that has lifted.

## HP Turbine Blades (92ea):

Minor erosion noted. All within Reference Data normal service limits.



Burns and/or erosion on the HP turbine blades. 1 You can accept erosion of the concave surface because of burning if there is no sign of holes.

# BORESCOPE

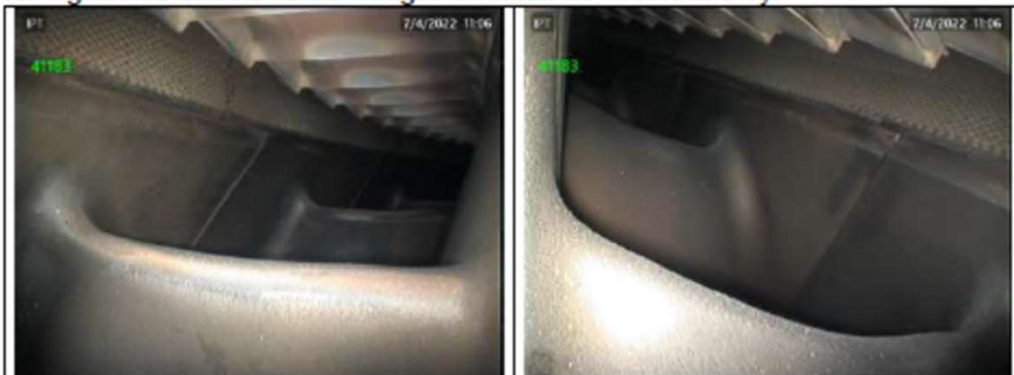
Report Reference: RM0422\_41183\_AERC\_06APR2022



IP Turbine Blades (126ea):  
Minor coating loss noted. All within Reference Data normal service limits. Images included for reference only.



IPT nozzle guide vanes:  
No significant defects noted. Images included for reference only.



General Observations- Combustion / Turbine Section: Noted defects on module are all within Reference Data normal service limits.

# BORESCOPE

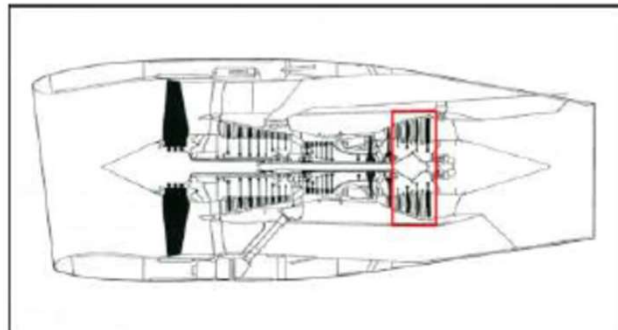
Report Reference: RM0422\_41183\_AERC\_06APR2022



## Section 5

LP Turbine.

- LP Turbine Blades Stages 1 - 4.



## Inspection Findings

LPT Stage 1 Blades (140ea): Minor coating loss noted. All within Reference Data normal service limits. Images included for reference only.



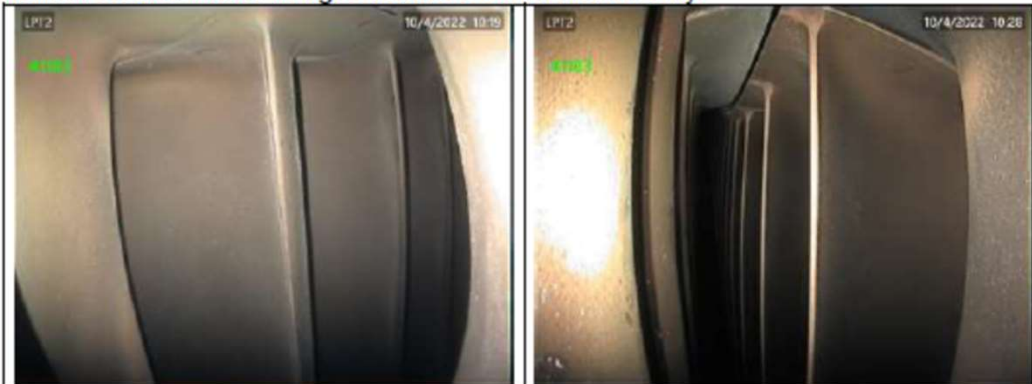


# BORESCOPE

Report Reference: **RM0422\_41183\_AERC\_06APR2022**



LPT Stage 2 Blades (84ea): Minor coating loss noted. All within Reference Data normal service limits. Images included for reference only.



LPT Stage 3 Blades (84ea): Minor coating loss noted. All within Reference Data normal service limits. Images included for reference only.



# BORESCOPE

Report Reference: **RM0422\_41183\_AERC\_06APR2022**



LPT Stage 4 Blades (80ea): Minor coating loss noted. All within Reference Data normal service limits. Images included for reference only.



General Observations – LP Turbine: Noted defects on module are all within Reference Data normal service limits.